



**F. H. PASCHEN  
RAGNAR BENSON  
JOINT VENTURE**



---

## **NICTD West Lake Corridor Project Construction Update**

**Week of 11.7.22 and 11.14.22**

### **Hammond**

- Utility Relocation, Sewer & Water
  - Electrical work at future South Hammond Station.
  - Underground Drainage installation at
    - Conkey Street
  - Watermain Relocation at Conkey Street
    - Roadway/Sidewalk/Monon Trail all closed at intersection.
    - Follow posted detours.
  - 165<sup>th</sup> Street/Blaine Intersection
    - Drainage Installation starting week of 11/14/22.
    - Follow posted detours and attached Maintenance of Traffic sheets.
  - Carrol Street/Lyman Avenue
    - Drainage Installation
    - Follow Posted Detours
- Monon Trail Closure
  - Monon closed from Douglas Street to 173<sup>rd</sup> Street.
- Roadway Work
  - Pouring concrete at future South Hammond Station (173<sup>rd</sup> Street)
    - Trucking operations on 173<sup>rd</sup> Street, minimal impact to vehicular traffic.
  - Asphalt Paving at future South Hammond Station (173<sup>rd</sup> Street)
    - Trucking operations on 173<sup>rd</sup> Street, minimal impact to vehicular traffic.
  - Curb and Gutter Pour at Conkey street during week of 11/14/22.
    - Intersection closed, please reference attached detour plans.
- Earthwork
  - Excavation continues at Conkey/Blaine Intersection.
    - Trucking operations through City of Hammond roadways, minimal impact to vehicular traffic.
  - Excavation from Douglas Street to Waltham Street.
    - Trucking operations through City of Hammond roadways, minimal impact to vehicular traffic.
- Future Hammond Station (Station off Sheffield Avenue)
  - Excavation continues at Future Hammond Station

- Trucking operations through City of Hammond roadways, minimal impact to vehicular traffic.
  - Removal of existing utilities
  - Installation of underground utilities
  - Hanover Street will be permanently closed between Wabash and Sheffield Avenues.
  - Dearborn at Gostlin Street will be closed permanently.
- Substructure Work for Bridges, Elevated Structures, and Retaining Walls
  - Michigan/Hohman.
    - Lane Restriction at Michigan/Hohman for the week of November 8th
  - Framing of pier structures at Hohman/Sibley.
  - Blaine Avenue Retaining Wall
    - Earth excavation and wall construction between Kenwood and 165<sup>th</sup> Street
    - On-going through week of November 21<sup>st</sup>.

### **Munster**

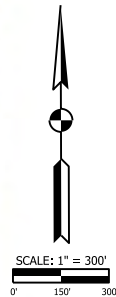
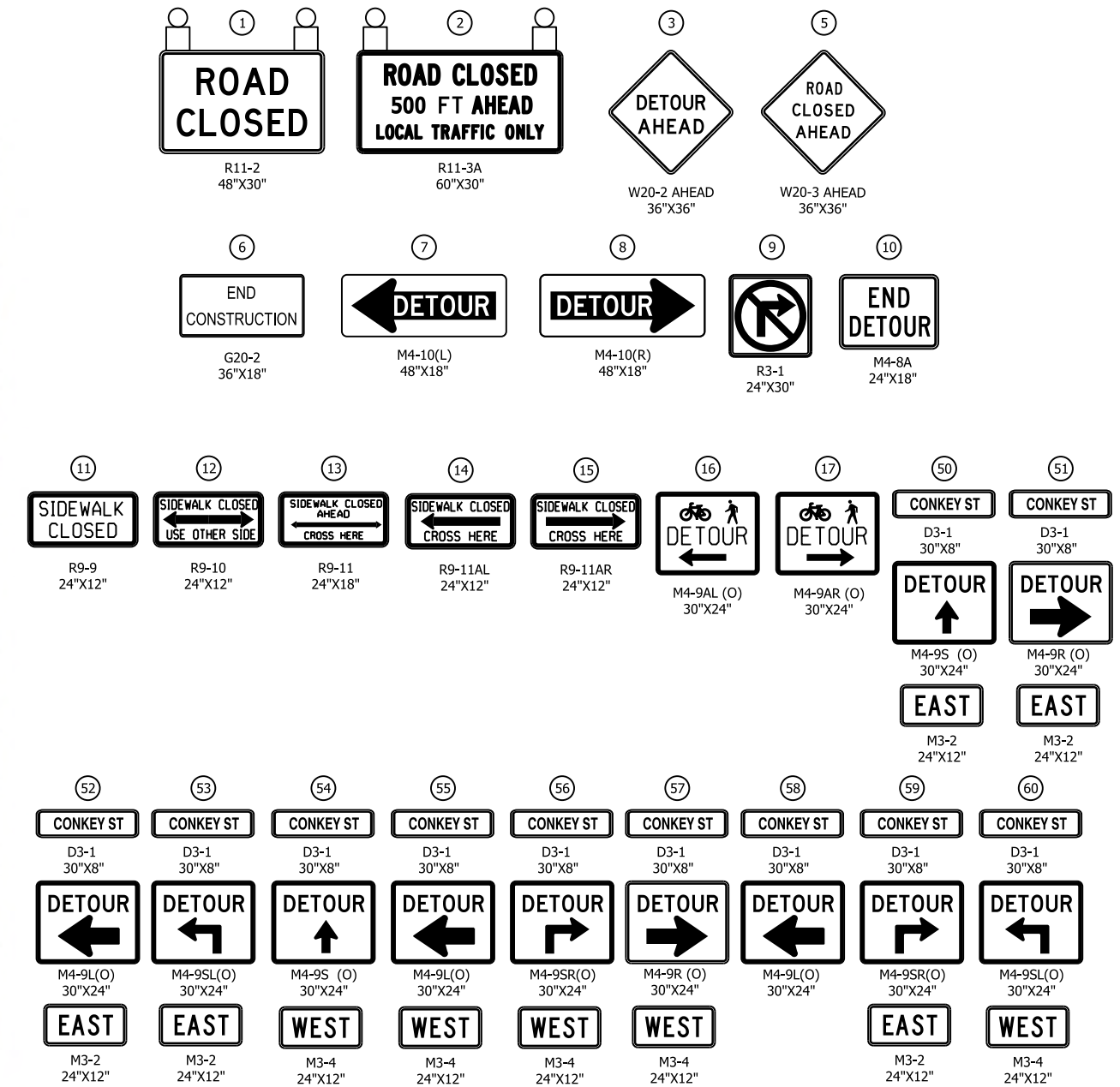
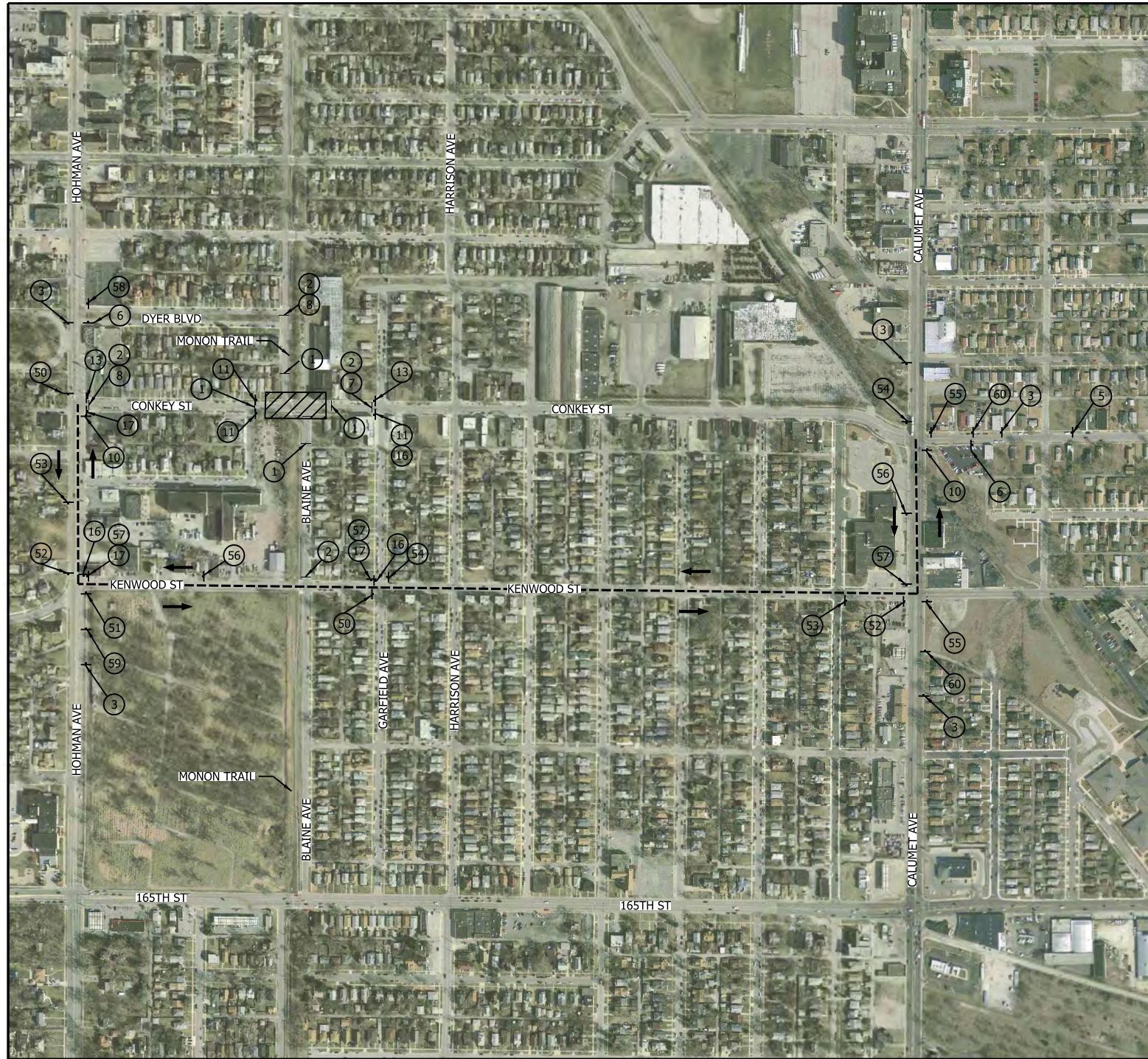
- NIPSCO & Telecommunications Relocations.
- Retaining Wall excavation/framing continues along Manor Ave. North and South of Broadmoor.
  - Trucking operations through the Town of Munster, minimal impact to vehicular traffic.
- Monon Trail will be closed for the foreseeable future from Little Calumet River to Ridge Road.
- Utility work at Fisher Street
  - Sidewalk North of Fisher Street is currently removed. Please use the shared-use path South of Fisher Street.
- Structure work at the Little Calumet River.
  - Trucking operations on Manor Avenue, minimal impact to vehicular traffic.
- Structure work to begin South of Fisher Street.
  - No impact to vehicular traffic.
- Site Excavation at Future Munster-Dyer Station.
  - Trucking operations along Columbia Avenue in Munster.
- Drainage Installation at Munster-Dyer Station
- Water main Installation at Munster-Dyer West Parking Lot
- Landscape seeding at Munster-Dyer West Parking Lot

### **Dyer**

- No work anticipated for this time period.

**For additional project information please visit:  
[www.nictdwestlake.com](http://www.nictdwestlake.com) or [www.fhp-rb.com](http://www.fhp-rb.com)**

PLOT DATE: 4/25/2022 PLOT TIME: 9:56:51 AM  
 FILE NAME: SHT-M-CI01-MTPL-04.dgn



- NOTES**
- SIGN DESIGNATIONS ARE PER IMUTCD.
  - SIGN LOCATIONS ARE APPROXIMATE. SEE BU G-C01 DWG. NO. G-CI01-GEDT-806 FOR SIGN PLACEMENT.
  - SEE BU G-C01 DWG. NO. G-CI01-GEDT-824A FOR SIGN POST DETAILS.
  - SEE BU G-C01 DWG. NO. G-CI01-GEDT-807 AND G-CI01-GEDT-808 FOR TYPE III BARRICADE SIGN PLACEMENT.

- LEGEND**
- TYPE III BARRICADE
  - - - SIGN
  - - - - - DETOUR ROUTE
  - DIRECTION OF TRAFFIC
  - ▨ WORK SPACE
  - (O) ORANGE
  - TYPE B LIGHT

**FINAL RFC PLANS** DWG NO. M-CI01-MTPL-04

**FHP** F.H. PASCHEN  
**R3** RAGNAR BENSON  
 JOINT VENTURE

**Jacobs**

REVISIONS		
ISSUE	DATE	DESCRIPTION

**NICD**  
 NORTHERN INDIANA COMMUTER  
 TRANSPORTATION DISTRICT  
 33 East Highway 12  
 Chesterton, Indiana 46304

**WEST LAKE**  
 CORRIDOR  
 DYER TO HAMMOND, INDIANA

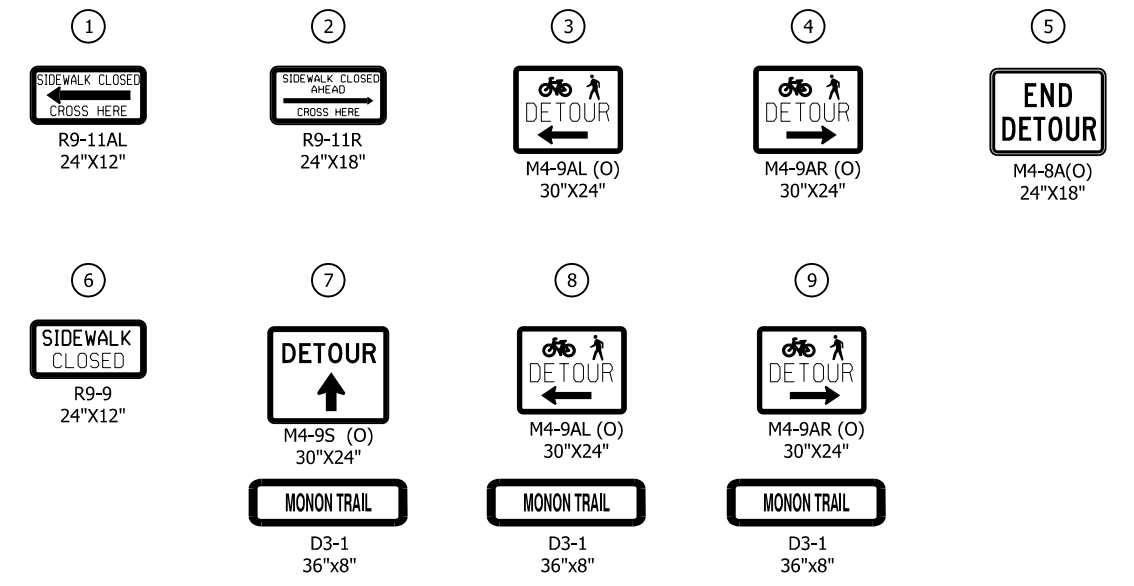
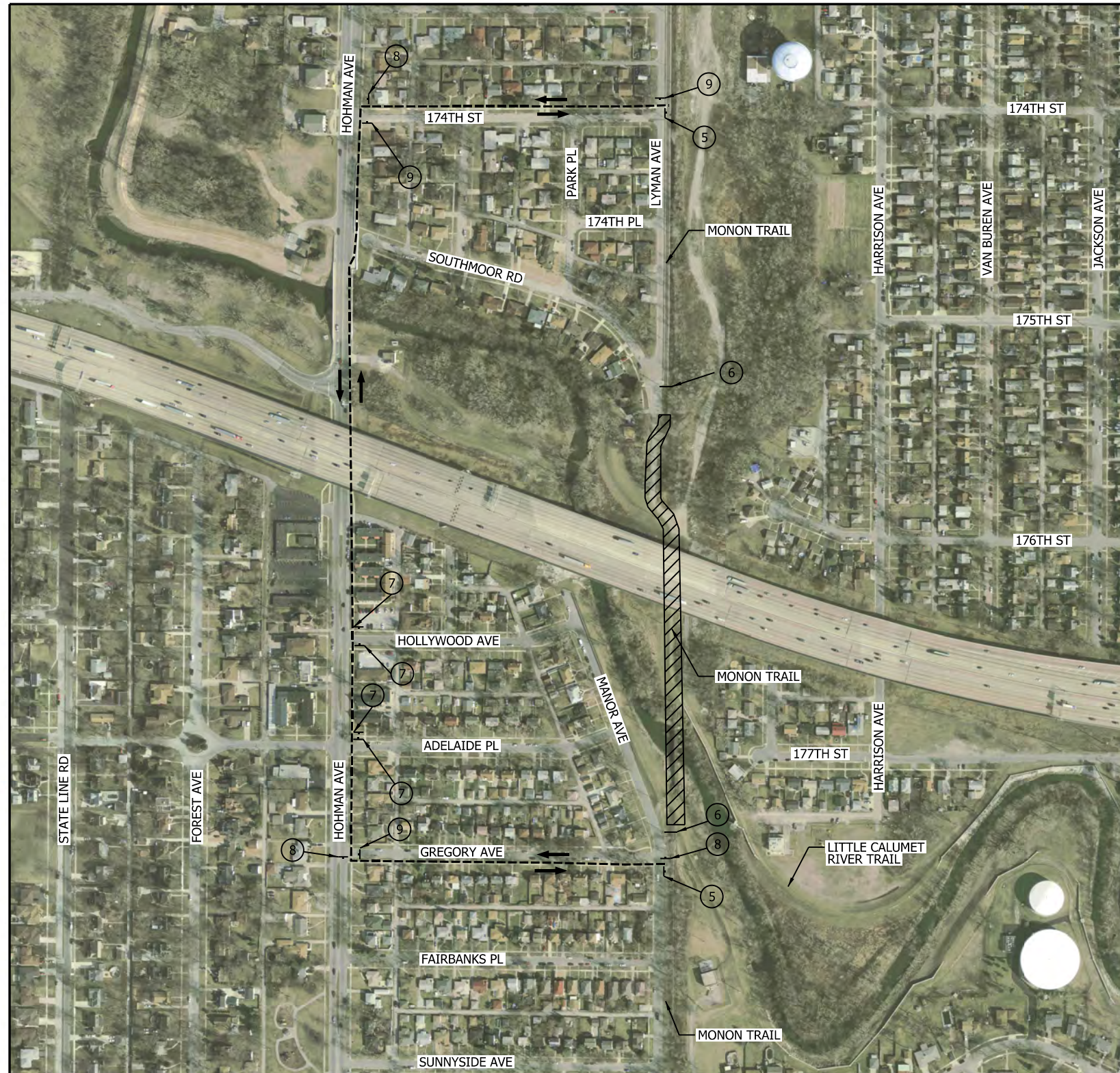
ANGELYN S. HACKER  
 REGISTERED  
 PROFESSIONAL ENGINEER  
 INDIANA  
 DATE: 4/26/22

BU:	M-CI01
DESIGNED:	A. SIPKOVSKY
DRAWN:	S. KOZLOWSKI
CHECKED:	A. SIPKOVSKY
SCALE:	1"=300'
DATE:	05/11/2022

**MAINTENANCE OF TRAFFIC  
 DETOUR PLAN - CONKEY STREET**

**FOR CONSTRUCTION** SHEET NO. 27 OF 205

PLOT DATE: 7/1/2022 PLOT TIME: 12:46:27 PM  
 FILE NAME: SHT-M-CI01-MTPL-08.dgn

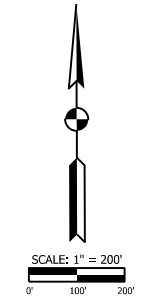


**NOTES**

- SIGN DESIGNATIONS ARE PER IMUTCD.
- SIGN LOCATIONS ARE APPROXIMATE. SEE BU G-C01 DWG. NO. G-CI01-GEDT-806 FOR SIGN PLACEMENT.
- SEE BU G-C01 DWG. NO. G-CI01-GEDT-824A FOR SIGN POST DETAILS.
- SEE BU G-C01 DWG. NO. G-CI01-GEDT-807 AND G-CI01-GEDT-808 FOR TYPE III BARRICADE SIGN PLACEMENT.

**LEGEND**

- TYPE II BARRICADE
- + SIGN
- - - DETOUR ROUTE
- ▨ WORK SPACE
- DIRECTION OF TRAFFIC
- (O) ORANGE



**FINAL RFC PLANS** DWG. NO. M-CI01-MTPL-08

**FHP** F.H. PASCHEN  
**R3** RAGNAR BENSON  
 JOINT VENTURE

**Jacobs**

REVISIONS		
ISSUE	DATE	DESCRIPTION

**NICD**  
 NORTHERN INDIANA COMMUTER  
 TRANSPORTATION DISTRICT  
 33 East Highway 12  
 Chesterton, Indiana 46304

**WEST LAKE**  
 CORRIDOR  
 DYER TO HAMMOND, INDIANA

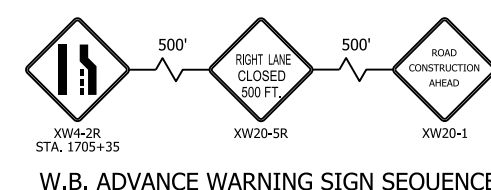
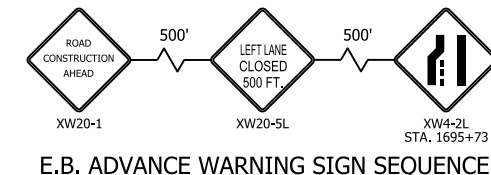
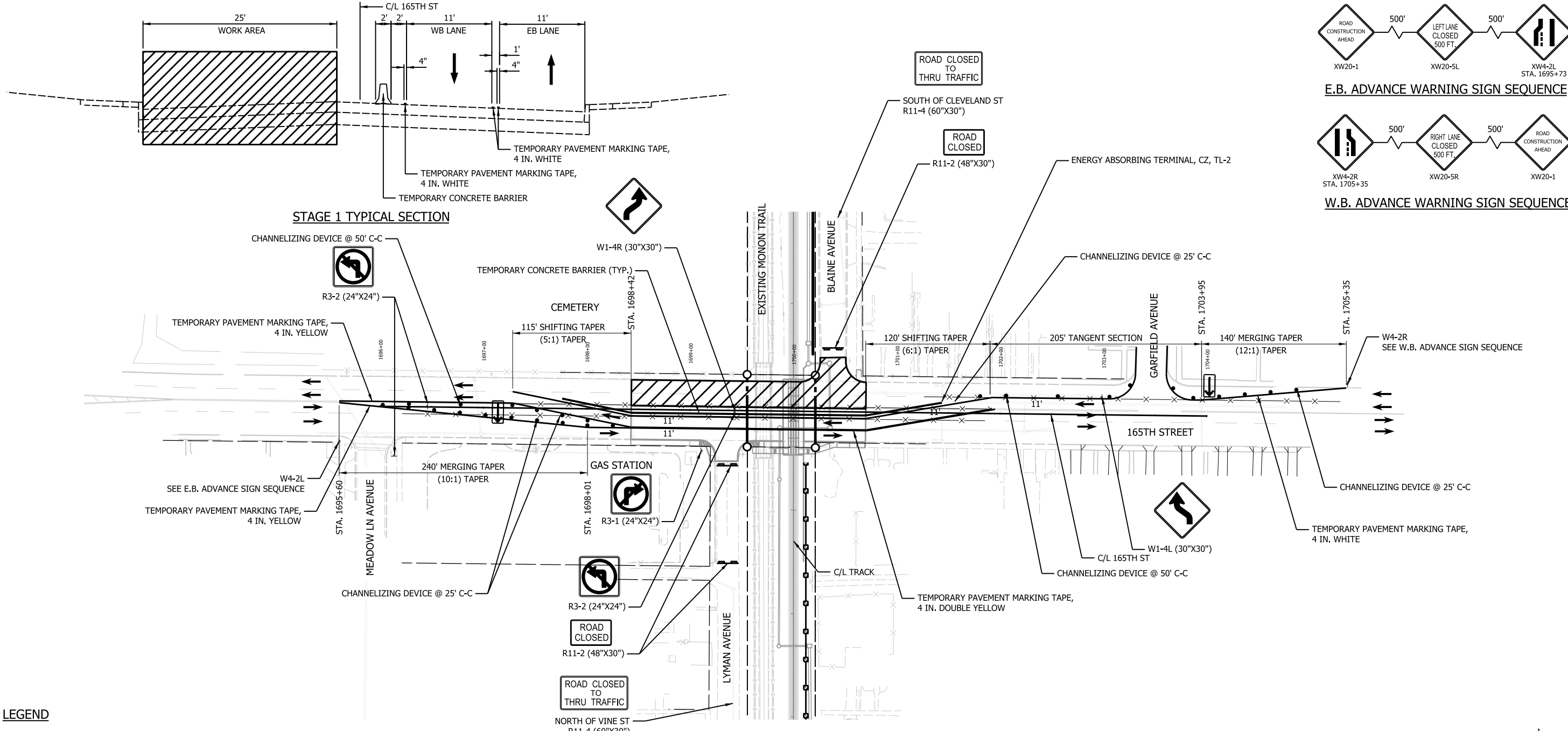
ANGELYN S. HACKBARTH  
 REGISTERED PROFESSIONAL ENGINEER  
 PE12200177  
 STATE OF INDIANA  
 DATE: 7/8/22

BU:	M-CI01
DESIGNED:	J. ROGGATZ
DRAWN:	J. ROGGATZ
CHECKED:	A. SIPKOVSKY
SCALE:	1"=200'
DATE:	05/11/2022

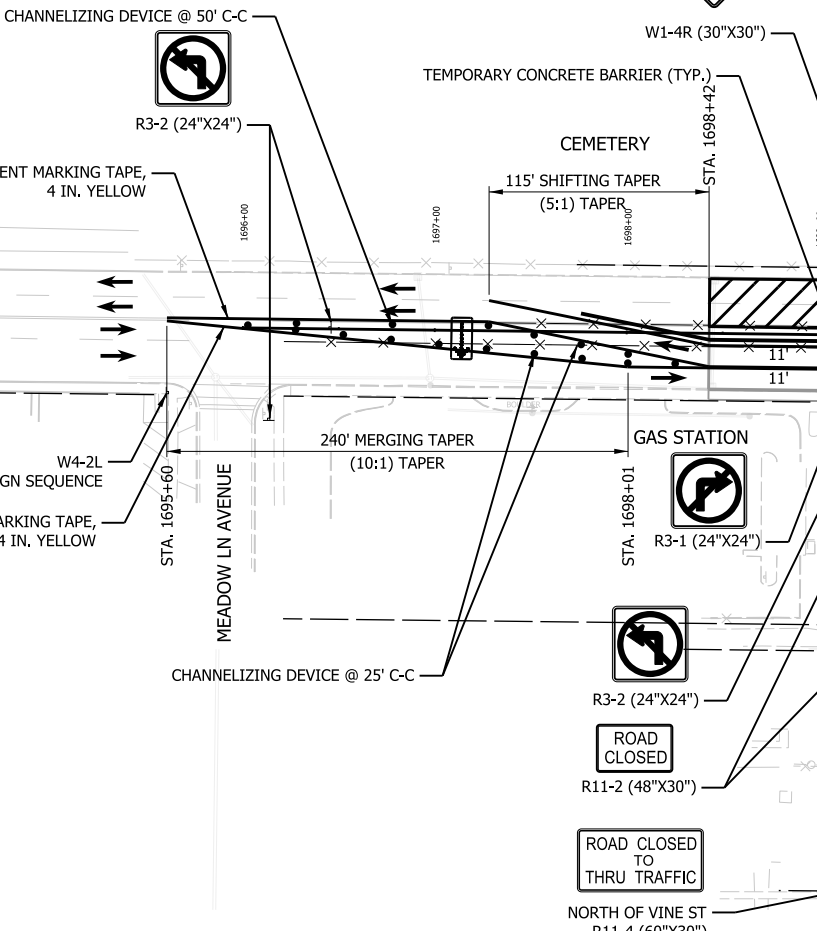
**MAINTENANCE OF TRAFFIC  
 DETOUR PLAN  
 MONON TRAIL**

**FOR CONSTRUCTION** SHEET NO. 31 OF 205

PLOT DATE: 4/25/2022 PLOT TIME: 9:57:16 AM  
 FILE NAME: SHT-M-CI01-MTBA-01.dgn



**STAGE 1 TYPICAL SECTION**

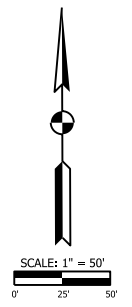


**LEGEND**

- CHANNELIZING DEVICE
- ⬇️ FLASHING ARROW SIGN
- x— REMOVAL OF PAVEMENT MARKINGS AND PRISMATIC REFLECTORS
- ⬆️ TYPICAL SIGN STANDARD (ROAD CLOSURE SIGN ASSEMBLY)
- TYPE III BARRICADE
- ➔ TRAFFIC FLOW
- ▨ WORK AREA
- ▤ PARKING LANE CLOSURE

**MAINTENANCE OF TRAFFIC NOTES**

- STAGE 1**
1. ESTABLISH AND MAINTAIN A DETOUR ROUTE FOR THE CLOSURE OF LYMAN AVENUE FROM NORTH OF VINE STREET TO 165TH STREET
  2. ESTABLISH AND MAINTAIN A DETOUR ROUTE FOR THE CLOSURE OF BLAINE AVENUE FROM CLEVELAND STREET TO 165TH STREET
  3. STAGE WILL CONSIST OF RECONSTRUCTION OF THE EASTBOUND LANES OF 165TH STREE FOR THE LENGTH OF ROADWAY LIMITS
  4. MAINTAIN ONE 11' LANE OF TRAFFIC IN EACH DIRECTION UTILIZING EXISTING EASTBOUND LANES
  5. MAINTAIN POSTED 25 MPH SPEED LIMIT ON 165TH STREET
  6. SEE STD G-CI01-GEDT-804A FOR MERGING OR SHIFTING TAPER DETAILS
  7. USE THIS MAINTENANCE OF TRAFFIC PLAN WITH IMUTCD TYPICAL APPLICATION TA-32
  8. 165TH ST AND CONKEY ST SHALL NOT BE CLOSED SIMULTANEOUSLY
  9. ELECTRONIC MESSAGE BOARDS GIVING NOTICE OF LANE CLOSURES REQUIRED TO BE PLACED TWO WEEKS IN ADVANCE OF CLOSURE



**FHP** F.H. PASCHEN  
**R3** RAGNAR BENSON  
 JOINT VENTURE

**Jacobs**

REVISIONS		
ISSUE	DATE	DESCRIPTION

**NICD**  
 NORTHERN INDIANA COMMUTER  
 TRANSPORTATION DISTRICT  
 33 East Highway 12  
 Chesterton, Indiana 46304

**WEST LAKE**  
 CORRIDOR  
 DYER TO HAMMOND, INDIANA

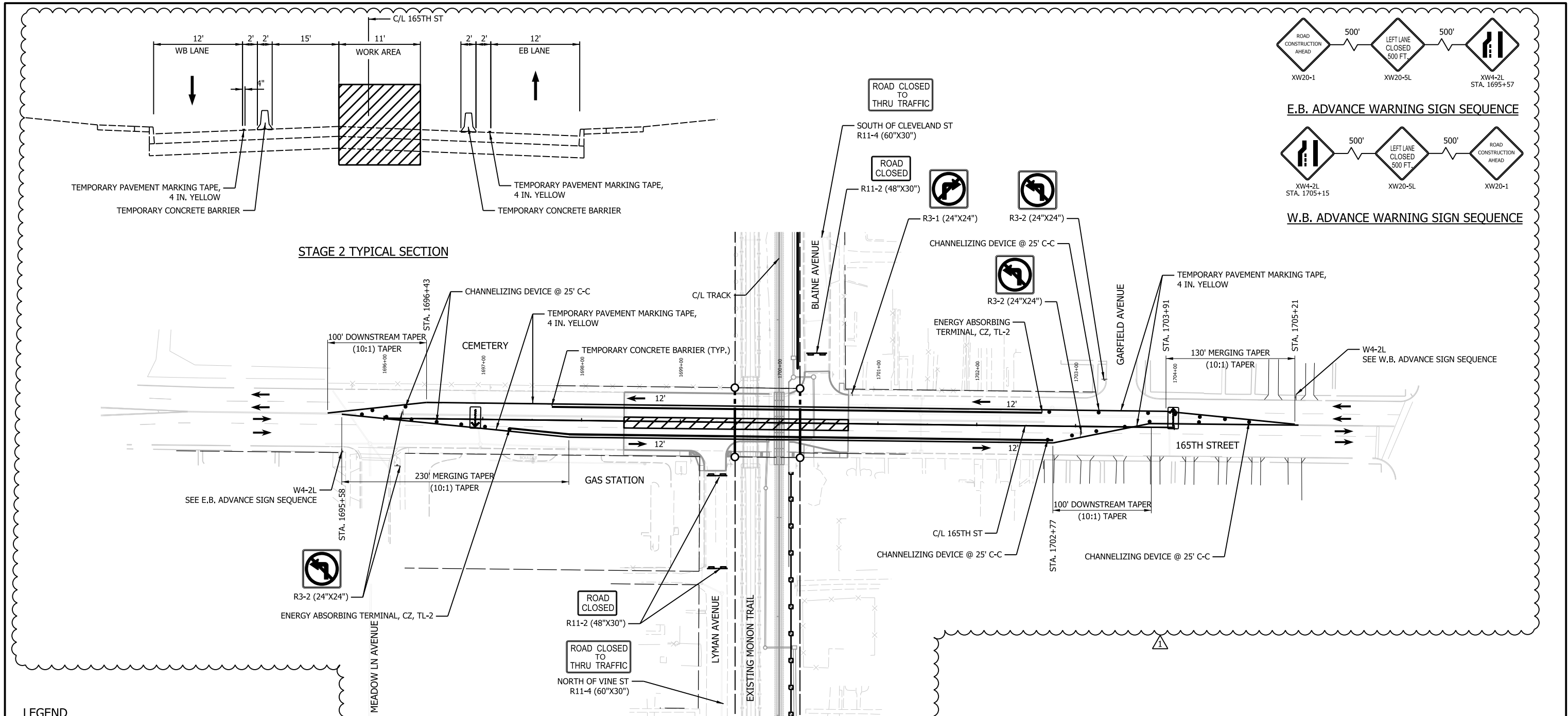
ANGELYN S. HACKBARTH  
 REGISTERED  
 PE12200177  
 STATE OF INDIANA  
 PROFESSIONAL ENGINEER  
 DATE: 4/26/22

BU:	M-CI01
DESIGNED:	A. SIPKOVSKY
DRAWN:	K. GOMEZ
CHECKED:	A. SIPKOVSKY
SCALE:	1"=50'
DATE:	05/11/2022

**FINAL RFC PLANS** DWG NO. **M-CI01-MTBA-01**

**MAINTENANCE OF TRAFFIC**  
**165TH STREET - STAGE 1**  
**FOR CONSTRUCTION** SHEET NO. **21 OF 205**

PLOT DATE: 8/18/2022 PLOT TIME: 12:40:08 PM  
 FILE NAME: SHT-M-CI01-MTBA-02.dgn

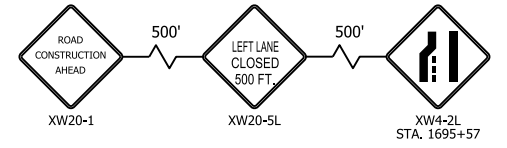


**LEGEND**

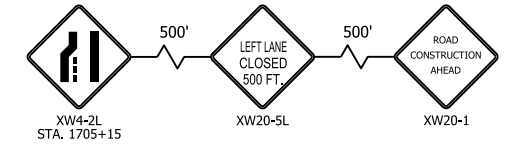
- CHANNELIZING DEVICE
- ⬇️ FLASHING ARROW SIGN
- TEMPORARY PAVEMENT MARKING
- x— REMOVAL OF PAVEMENT MARKINGS AND PRISMATIC REFLECTORS
- ⚡ TYPICAL SIGN STANDARD (ROAD CLOSURE SIGN ASSEMBLY)
- TYPE III BARRICADE
- ➔ TRAFFIC FLOW
- ▨ WORK AREA
- ▩ PARKING LANE CLOSURE

**MAINTENANCE OF TRAFFIC NOTES**

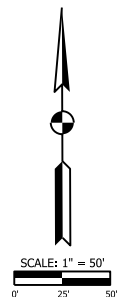
- STAGE 2**
1. ESTABLISH AND MAINTAIN A DETOUR ROUTE FOR THE CLOSURE OF LYMAN AVENUE FROM NORTH OF VINE STREET TO 165TH STREET
  2. ESTABLISH AND MAINTAIN A DETOUR ROUTE FOR THE CLOSURE OF BLAINE AVENUE FROM CLEVELAND STREET TO 165TH STREET
  3. STAGE WILL CONSIST OF RECONSTRUCTION OF THE EASTBOUND LANES OF 165TH STREET FOR THE LENGTH OF ROADWAY LIMITS
  4. MAINTAIN ONE 12' LANE OF TRAFFIC IN WESTBOUND DIRECTION UTILIZING COMPLETED WESTBOUND PAVEMENT
  5. MAINTAIN ONE 12' LANE OF TRAFFIC IN EASTBOUND DIRECTION UTILIZING COMPLETED EASTBOUND PAVEMENT
  6. MAINTAIN POSTED 25 MPH SPEED LIMIT ON 165TH STREET
  7. SEE STD G-CI01-GEDT-804A FOR MERGING OR SHIFTING TAPER DETAILS
  8. USE THIS MAINTENANCE OF TRAFFIC PLAN WITH IMUTCD TYPICAL APPLICATION TA-32
  9. 165TH ST AND CONKEY ST SHALL NOT BE CLOSED SIMULTANEOUSLY
  10. ELECTRONIC MESSAGE BOARDS GIVING NOTICE OF LANE CLOSURES REQUIRED TO BE PLACED TWO WEEKS IN ADVANCE OF CLOSURE



**E.B. ADVANCE WARNING SIGN SEQUENCE**



**W.B. ADVANCE WARNING SIGN SEQUENCE**



**F.H. PASCHEN RAGNAR BENSON JOINT VENTURE**

**Jacobs**

REVISIONS		
ISSUE	DATE	DESCRIPTION
1	08/19/2022	DCJ-0021 165TH ST CURB

**NICD**  
 NORTHERN INDIANA COMMUTER TRANSPORTATION DISTRICT  
 33 East Highway 12  
 Chesterton, Indiana 46304

**WEST LAKE CORRIDOR**  
 DYER TO HAMMOND, INDIANA

REGISTERED PROFESSIONAL ENGINEER  
 KATELYN S. HACKER  
 PE12200177  
 DATE: 8/18/22

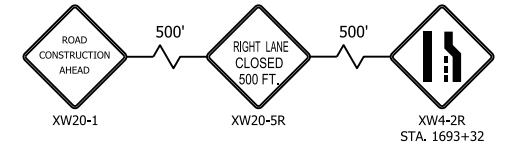
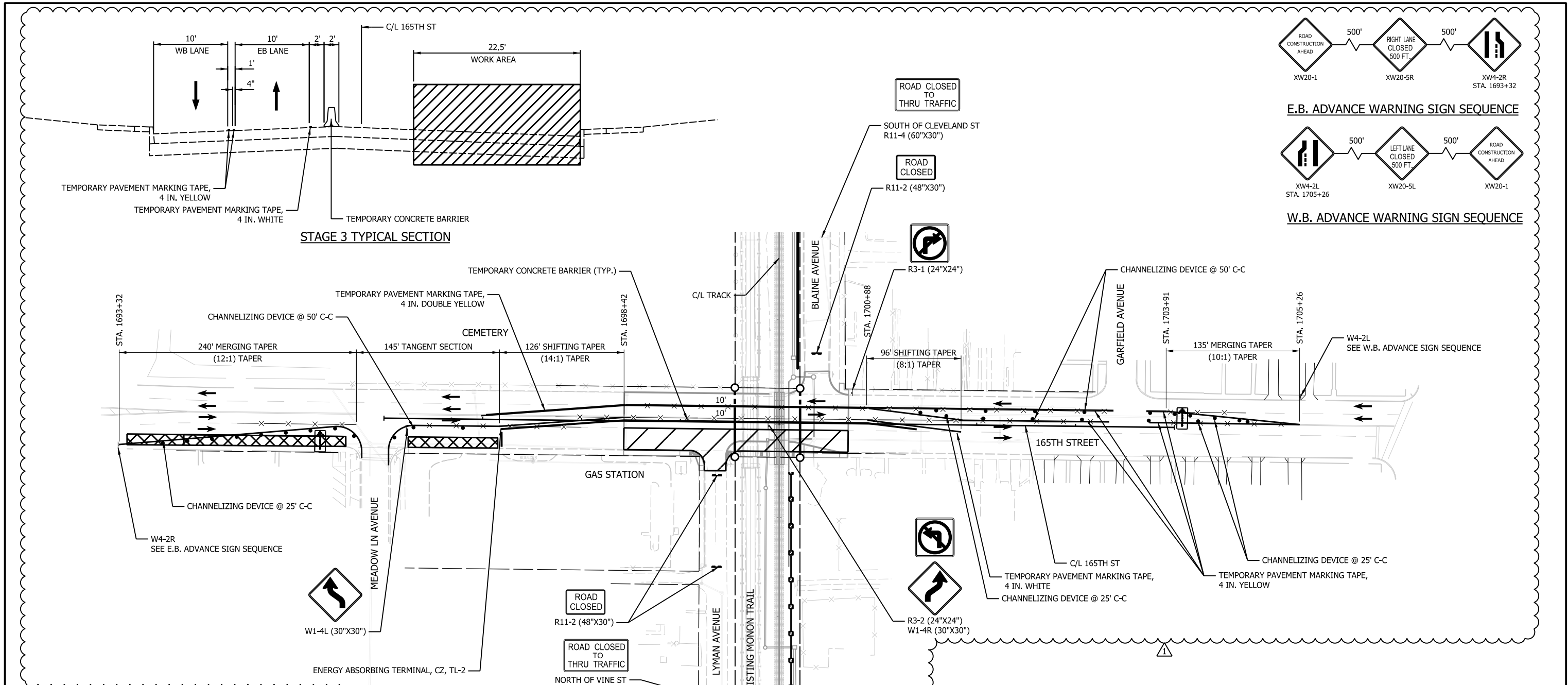
BU:	M-CI01
DESIGNED:	A. SIPKOVSKY
DRAWN:	K. GOMEZ
CHECKED:	A. SIPKOVSKY
SCALE:	1"=50'
DATE:	05/11/2022

**FINAL RFC PLANS** DWG. NO. **M-CI01-MTBA-02**

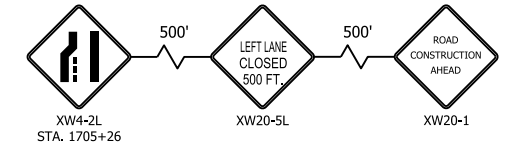
**MAINTENANCE OF TRAFFIC 165TH STREET - STAGE 2**

**FOR CONSTRUCTION** SHEET NO. **22 OF 205**

PLOT DATE: 8/18/2022 PLOT TIME: 12:39:30 PM  
 FILE NAME: SHT-M-CI01-MTBA-03.dgn



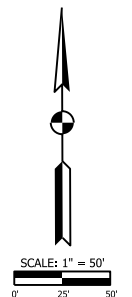
E.B. ADVANCE WARNING SIGN SEQUENCE



W.B. ADVANCE WARNING SIGN SEQUENCE

- LEGEND**
- CHANNELIZING DEVICE
  - ⬇️ FLASHING ARROW SIGN
  - TEMPORARY PAVEMENT MARKING
  - x— REMOVAL OF PAVEMENT MARKINGS AND PRISMATIC REFLECTORS
  - TYPICAL SIGN STANDARD (ROAD CLOSURE SIGN ASSEMBLY)
  - TYPE III BARRICADE
  - ➔ TRAFFIC FLOW
  - ▨ WORK AREA
  - ▤ PARKING LANE CLOSURE

- MAINTENANCE OF TRAFFIC NOTES**
- STAGE 3**
1. ESTABLISH AND MAINTAIN A DETOUR ROUTE FOR THE CLOSURE OF LYMAN AVENUE FROM NORTH OF VINE STREET TO 165TH STREET
  2. ESTABLISH AND MAINTAIN A DETOUR ROUTE FOR THE CLOSURE OF BLAINE AVENUE FROM CLEVELAND STREET TO 165TH STREET
  3. STAGE WILL CONSIST OF RECONSTRUCTION OF THE EASTBOUND LANES OF 165TH STREE FOR THE LENGTH OF ROADWAY LIMITS
  4. MAINTAIN ONE 10' LANE OF TRAFFIC IN EACH DIRECTION UTILIZING COMPLETED WESTBOUND PAVEMENT
  5. MAINTAIN POSTED 25 MPH SPEED LIMIT ON 165TH STREET
  6. SEE STD G-CI01-GEDT-804A FOR MERGING OR SHIFTING TAPER DETAILS
  7. USE THIS MAINTENANCE OF TRAFFIC PLAN WITH IMUTCD TYPICAL APPLICATION TA-32
  8. 165TH ST AND CONKEY ST SHALL NOT BE CLOSED SIMULTANEOUSLY
  9. ELECTRONIC MESSAGE BOARDS GIVING NOTICE OF LANE CLOSURES REQUIRED TO BE PLACED TWO WEEKS IN ADVANCE OF CLOSURE



**F.H. PASCHEN RAGNAR BENSON JOINT VENTURE**

**Jacobs**

REVISIONS		
ISSUE	DATE	DESCRIPTION
1	08/19/2022	DCJ-0021 165TH ST CURB

**NICD**

NORTHERN INDIANA COMMUTER TRANSPORTATION DISTRICT  
 33 East Highway 12  
 Chesterton, Indiana 46304

**WEST LAKE CORRIDOR**

DYER TO HAMMOND, INDIANA

REGISTERED PROFESSIONAL ENGINEER  
 KATELYN S. HACKER  
 PE12200177  
 STATE OF INDIANA

DATE: 8/18/22

BU:	M-CI01
DESIGNED:	A. SIPKOVSKY
DRAWN:	K. GOMEZ
CHECKED:	A. SIPKOVSKY
SCALE:	1"=50'
DATE:	05/11/2022

**FINAL RFC PLANS** DWG NO. **M-CI01-MTBA-03**

**MAINTENANCE OF TRAFFIC 165TH STREET - STAGE 3**

**FOR CONSTRUCTION** SHEET NO. **23 OF 205**