



---

## **NICTD West Lake Corridor Project Construction Update**

**Week of 2.13.2023 & 2.20.2023**

### **Hammond**

- **Closures**
  - Russel Street (between Hohman Avenue and Lyman Avenue)
    - Closure is currently active.
    - See Attached Detour.
  - 165<sup>th</sup> Street (Closure to begin 2/27/23)
    - Closure and Detour details will be posted during the week of 2/13/23 once confirmed with the City of Hammond.
    - From 2/27/23 – 3/12/23 a single East Bound lane will be the only vehicular traffic on 165<sup>th</sup> street between Hohman Avenue and Harrison Avenue.
      - Ⓢ Please plan accordingly for these two weeks.
    - From 3/13/23 until a date TBD in May, there will be one East Bound Lane and one West Bound Lane on 165<sup>th</sup> Street between Hohman Avenue and Harrison Avenue.
- **Utility Relocation, Sewer & Water**
  - Drainage Removals/Installation
    - Future Hammond Gateway Station
      - Ⓢ No impact to vehicular traffic
    - Russel Street Water Main & Sanitary Relocation
      - Ⓢ Impact to vehicular traffic
      - Ⓢ See attached detour
- **Retaining Wall Between Sibley Street and Fayette Street**
  - Receiving Modular Concrete Blocks
    - Trucking Operations through City of Hammond roadways, minimal impact to vehicular traffic.
  - Framing for concrete.
  - Setting and Backfilling Concrete Blocks
- **Retaining Wall South of 173<sup>rd</sup> (Start on February 1<sup>st</sup>)**
  - Setting noise wall week of 2/13/23.
  - No impact to vehicular traffic.
- **Retaining Wall at Blaine**
  - Pouring concrete noise wall

- Flagger will be present on Blaine Avenue to maintain vehicular traffic
  - No road closure
- **Monon Trail Closure**
  - Monon closed from Douglas Street to Little Calumet River
  - No connection to Lackawanna Trail.
- Hanover Street will be permanently closed between Wabash and Sheffield Avenues.
- Dearborn at Gostlin Street will be closed permanently.
- **Substructure Work for Bridges, Elevated Structures, and Retaining Walls**
  - Michigan/Hohman.
    - Forming Bridge Abutments
    - Driving Production Pile
    - Setting Steel
  - Hohman/Sibley
    - Steel Erection for Bridge going over Norfolk Southern Railway
    - Leveling pad being constructed
  - Blaine Avenue Retaining Wall
    - Wall construction between Kenwood and 165<sup>th</sup> Street
    - On-going through weeks of January 16<sup>th</sup> and 23<sup>rd</sup>

### **Munster**

- NIPSCO & Telecommunications Relocations.
- Manor Closure Between Beverly Place and Gregory Ave.
  - Detour Plan attached. Closure begins 2/13/23 through 2/17/23
- Retaining Wall between Little Calumet River and Broadmoor
  - Retaining Wall excavation/framing continues along Manor Ave. North and South of Broadmoor.
  - Trucking operations through the Town of Munster, minimal impact to vehicular traffic.
- Monon Trail will be closed for the foreseeable future from Little Calumet River to Ridge Road.
- Structure work at the Little Calumet River.
  - Trucking operations on Manor Avenue, minimal impact to vehicular traffic.
- **Utility Relocation: Storm, Sanitary & Water**
  - Drainage Installation near retaining wall between Broadmoor and Little Calumet River.
  - Drainage Installation between Fisher Street and Ridge Road along Monon Trail
    - No impact to vehicular traffic
  - Potholing along CSX ROW near Hartsfield Village
    - No impact to vehicular traffic

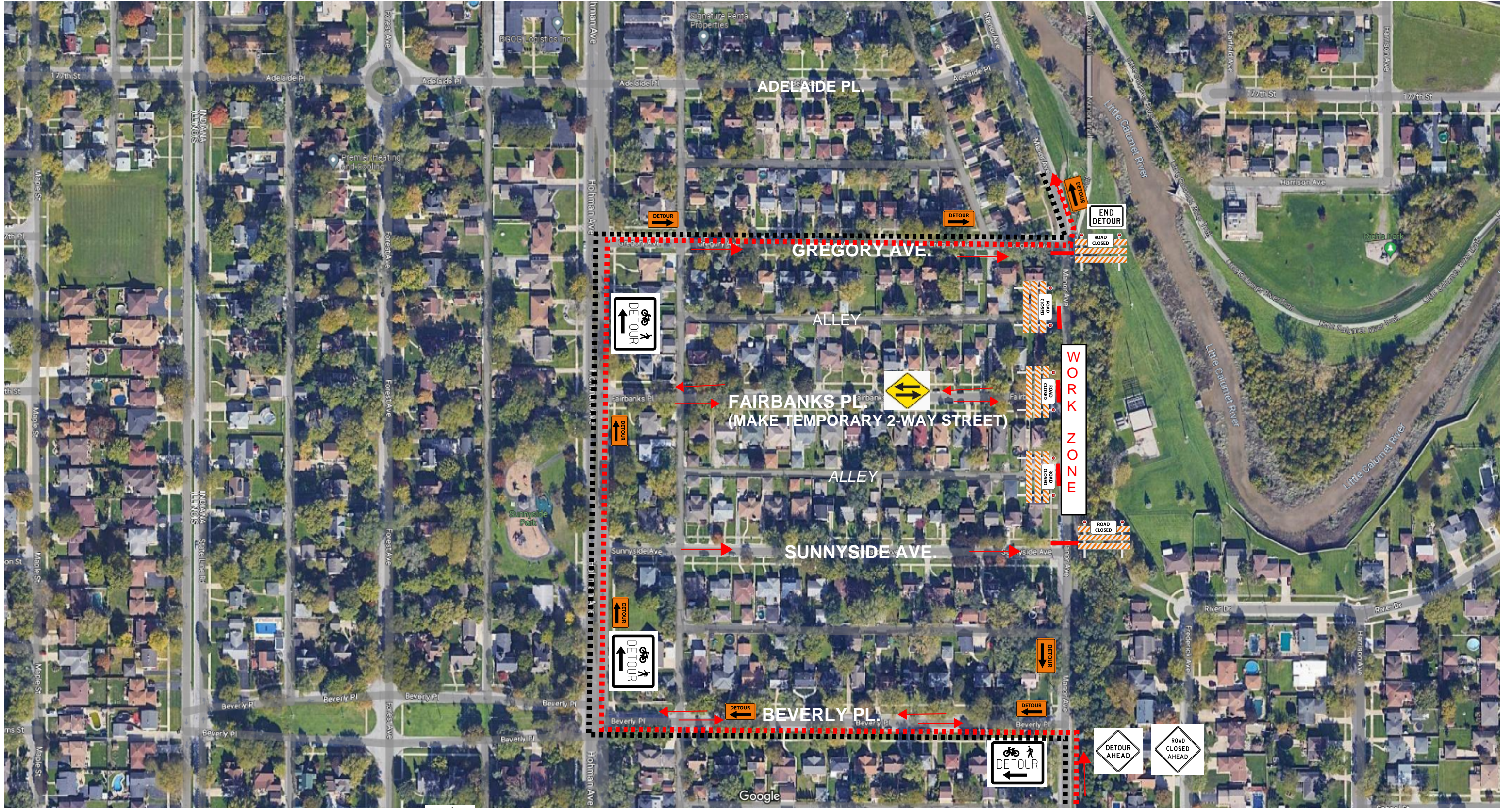
### **Dyer**

- No work anticipated for this time period.

**For additional project information please visit: [www.nictdwestlake.com](http://www.nictdwestlake.com) or [www.fhp-rb.com](http://www.fhp-rb.com)**



# MANOR AVE. NORTHBOUND DETOUR



### LEGEND:

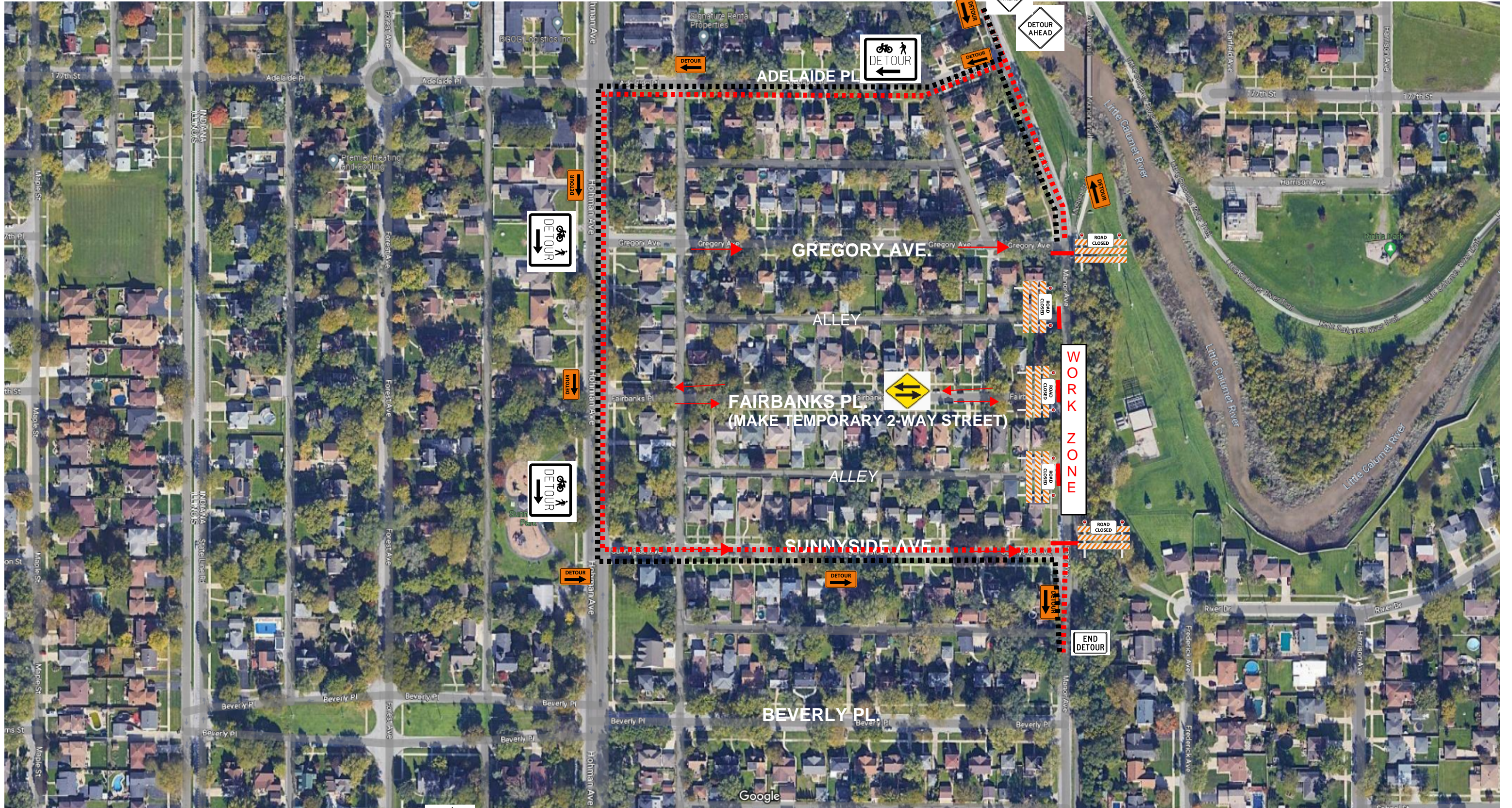
- DIRECTION OF TRAFFIC
- ▨ WORK SPACE
- TYPE III BARRICADE

- - - - Vehicular Detour
- · · · Pedestrian Detour

Imagery ©2023 IndianaMap Framework Data, Maxar Technologies, U.S. Geological Survey, USDA/FPAC/GEO, Map data ©2023 100 ft


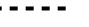


# MANOR AVE. SOUTHBOUND DETOUR



### LEGEND:

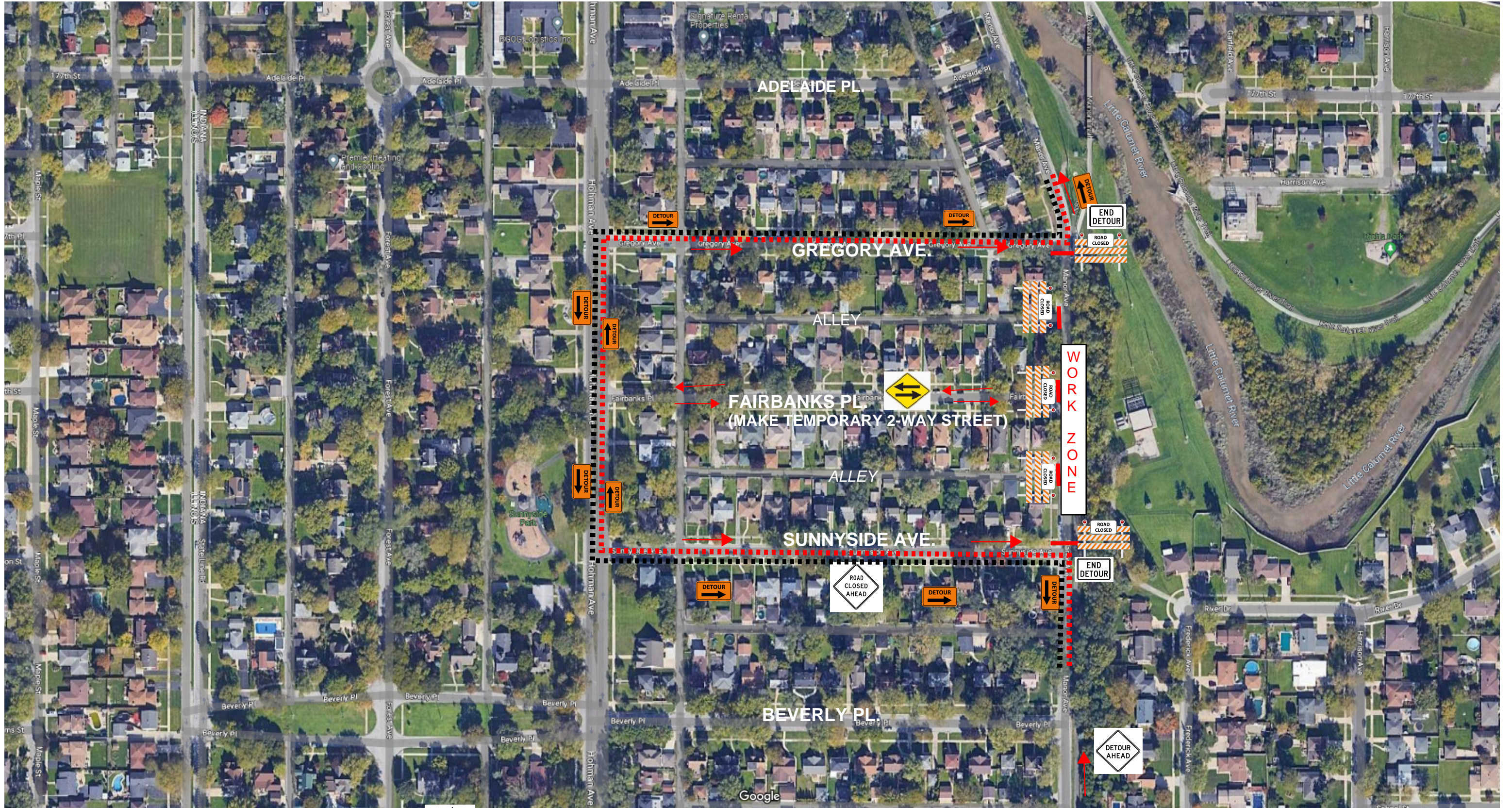
-  DIRECTION OF TRAFFIC
-  WORK SPACE
-  TYPE III BARRICADE

-  Vehicular Detour
-  Pedestrian Detour

Imagery ©2023 IndianaMap Framework Data, Maxar Technologies, U.S. Geological Survey, USDA/FPAC/GEO, Map data ©2023 100 ft



# MANOR AVE. EASTBOUND DETOUR



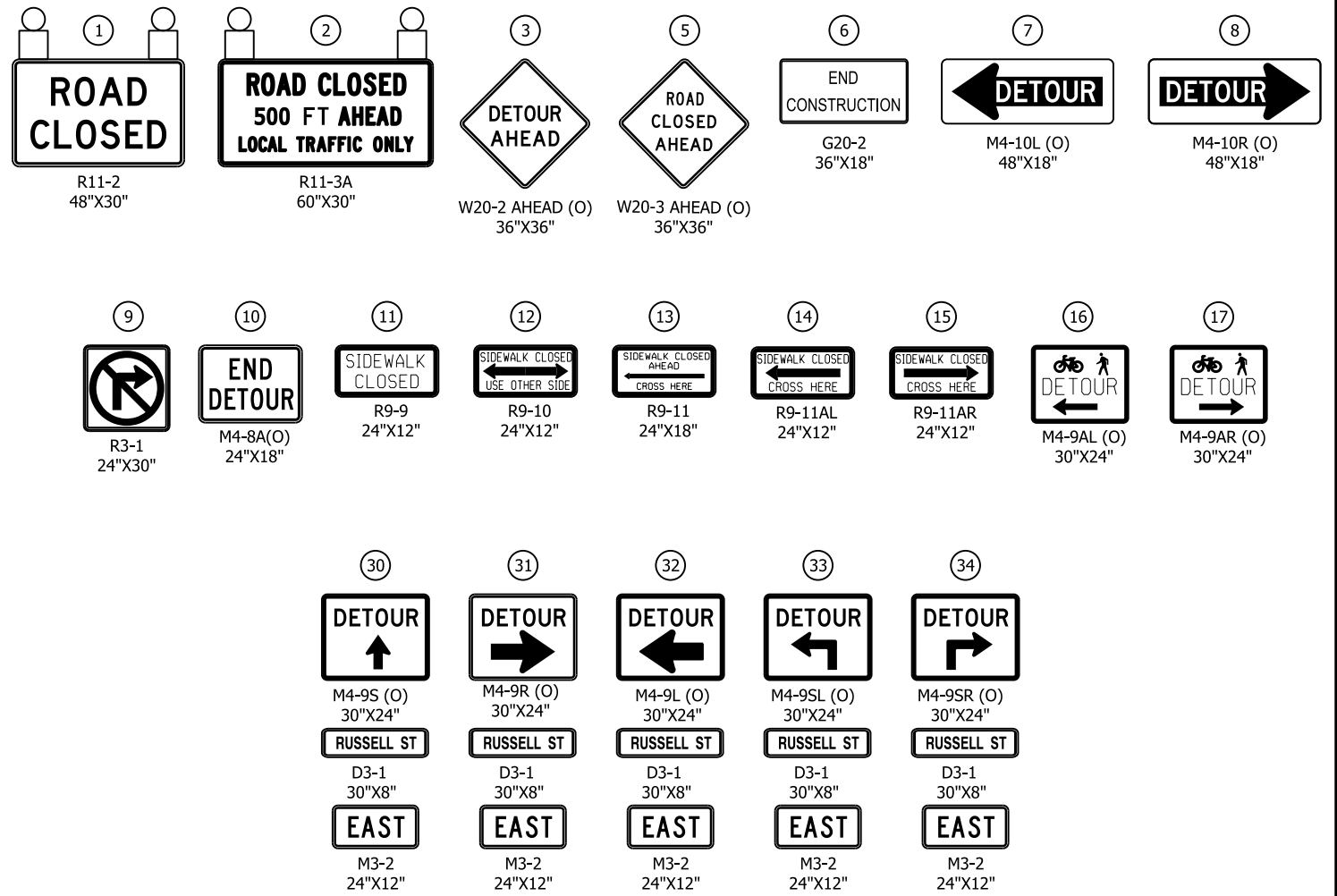
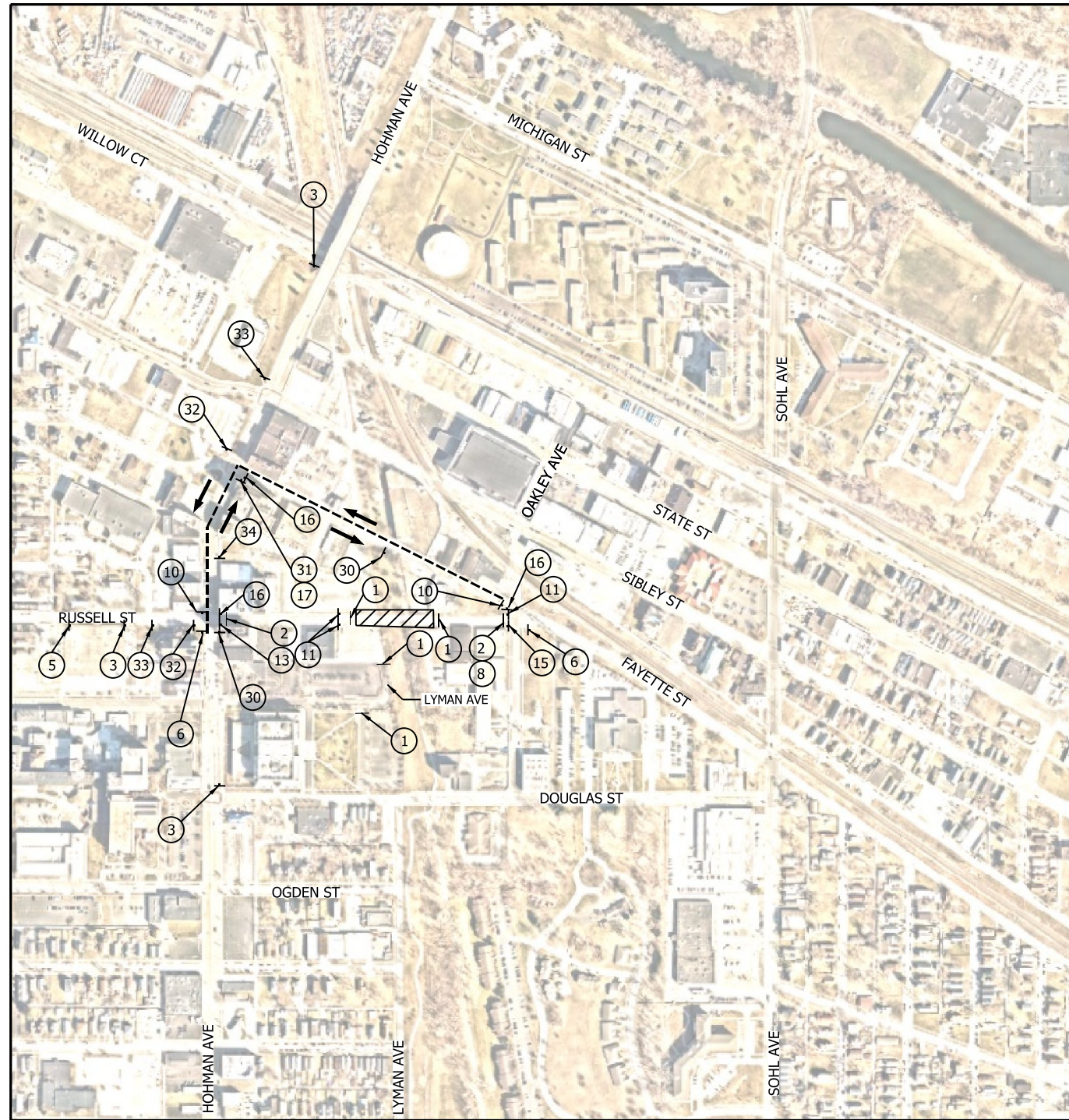
### LEGEND:

- DIRECTION OF TRAFFIC
- WORK SPACE
- TYPE III BARRICADE

- Vehicular Detour
- Pedestrian Detour

Imagery ©2023 IndianaMap Framework Data, Maxar Technologies, U.S. Geological Survey, USDA/FPAC/GEO, Map data ©2023 100 ft



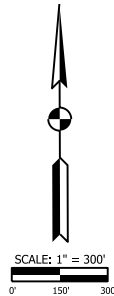


**NOTES**

- SIGN DESIGNATIONS ARE PER IMUTCD.
- SIGN LOCATIONS ARE APPROXIMATE. SEE BU G-C01 DWG NO. [G-CI01-GEDT-801](#), [G-CI01-GEDT-802](#), AND [G-CI01-GEDT-803](#) FOR SIGN PLACEMENT.
- SEE BU G-C01 DWG NO. [G-CI01-GEDT-820](#), [G-CI01-GEDT-821](#) AND [G-CI01-GEDT-822](#) FOR SIGN POST DETAILS.
- SEE BU G-C01 DWG NO. [G-CI01-GEDT-807](#) AND [G-CI01-GEDT-808](#) FOR TYPE III BARRICADE APPLICATION STANDARDS.
- THE CONTRACTOR SHALL MAINTAIN FREE PASSAGE OF PEDESTRIANS ON ONE SIDE OF RUSSELL STREET WHEN PRACTICABLE.
- RUSSELL STREET IS CURRENTLY A ONE-WAY STREET EASTBOUND. PRIOR TO ANY WORK SPACE CLOSURES ON RUSSELL STREET, CONVERT TO TWO-WAY AND PLACE THE PROPOSED SIGNS AS SHOWN ON THE 'SIGNING AND PAVEMENT MARKING' PLAN FOR RUSSELL STREET ON [DWG NOS. N-CI05-RDSN-02](#), [N-CI05-RDSN-03](#), [N-CI05-RDSN-04](#).
- LYMAN AVENUE IS THE ONLY OUTLET FROM THE FEDERAL PLAZA PARKING LOT. SEE DWG NOS. [N-CI05-MTPL-07](#) AND [N-CI05-MTPL-08](#) FOR LOT DETOUR INFORMATION.

**LEGEND**

- TYPE III BARRICADE
- SIGN
- - - - - DETOUR ROUTE
- DIRECTION OF TRAFFIC
- ▨ WORK SPACE
- (O) ORANGE
- TYPE B LIGHT



PLOT DATE: 4/25/2022 PLOT TIME: 10:29:00 AM  
FILE NAME: SHT-N-CI05-MTPL-02.dgn

**FHP** | F.H. PASCHEN  
RAGNAR BENSON  
JOINT VENTURE

**Jacobs**

REVISIONS		
ISSUE	DATE	DESCRIPTION

**NICD**  
NORTHERN INDIANA COMMUTER  
TRANSPORTATION DISTRICT  
33 East Highway 12  
Chesterton, Indiana 46304

**WEST LAKE**  
CORRIDOR  
DYER TO HAMMOND, INDIANA

STATE OF INDIANA  
REGISTERED PROFESSIONAL ENGINEER  
DATE: 4/25/22

BU:	N-CI05
DESIGNED:	A. SIPKOVSKY
DRAWN:	S. KOZLOWSKI
CHECKED:	A. SIPKOVSKY
SCALE:	1"=300'
DATE:	05/03/2022

**FINAL RFC PLANS** | DWG NO. N-CI05-MTPL-02

**MAINTENANCE OF TRAFFIC  
DETOUR PLAN - RUSSELL STREET**

**FOR CONSTRUCTION** | SHEET NO. 10 OF 62