



---

## **NICTD West Lake Corridor Project Construction Update**

**Week of 4.5.2024 & 4.12.2024**

### **Hammond**

- **Closures**
  - Russel Street (between Hohman Avenue and Lyman Avenue)
    - Russel Street is closed at West Lake Corridor
    - Follow posted detour.
  - State Street
    - Closure is currently active.
    - Willow Court is open.
  - Dearborn at Gostlin Street will be closed permanently.
  - Hanover Street has been permanently closed between Wabash and Sheffield Avenues.
- **Utility Relocation, Sewer & Water**
  - Utility Installation
    - Future Hammond Gateway Station
    - ⑩ No impact to vehicular traffic
- **Monon Trail Closure**
  - Monon closed from 173<sup>rd</sup> Street to Little Calumet River
    - Closed indefinitely until rail operation has been completed/pedestrian bridge is installed.
    - No connection to Lackawanna Trail.
- **Rail Construction**
  - Track work from Douglas Street heading North on Elevated Structures.
    - Rail Contractor spreading ballast on elevated structures.
    - No impact to vehicular traffic
- **Substructure Work for Bridges, Elevated Structures, and Retaining Walls**
  - Various Bridges and Elevated Structures are being detailed and waterproofed, with concrete pours to follow.
    - No impact to vehicular traffic.
- **Station Construction**
  - Contractor finishing future Hammond Gateway Station Building.




**For additional project information please visit:  
[www.nictdwestlake.com](http://www.nictdwestlake.com) or [www.fhp-rb.com](http://www.fhp-rb.com)**

## **Munster**

- **Closures**
  - Manor Avenue (Between Ridge Road and Broadmoor Avenue) – Closure Active
    - See attached detour.
  - 45<sup>th</sup> Street – FULL CLOSURE
    - Beginning on April 8<sup>th</sup> at 6 PM through April 9<sup>th</sup> at 6 AM.
    - Closure used for setting of bridge over 45<sup>th</sup> Street
      - See attached detour plan and follow posted signage.
  - 45<sup>th</sup> Street – Lane Closures – On-Going – 5/3/24 (6 AM)
    - Follow posted signage.
    - Lane closure details attached.
- **Elevated Structure Work at 45<sup>th</sup> Street**
  - JV will be setting two elevated structures beginning 4/5/2024.
    - 1<sup>st</sup> structure will be set over CSX Spur Track (South of 45<sup>th</sup> Street) on 4/5/2024.
      - Impact to vehicular traffic includes lane closures.
    - 2<sup>nd</sup> structure will be set over 45<sup>th</sup> street on 4/8/2024.
      - Impact to vehicular traffic will be a full closure. See details above.
- **Monon Trail** will be closed for the foreseeable future from Little Calumet River to Fisher Street
  - Closure will last until rail operation is complete from Fisher-Ridge & Ridge to Little Calumet. Tunnel at Belden Place is now open. Access from Manor Avenue or Fredrick Avenue. Monon Trail remains closed in this area due to Bridge construction at the Little Calumet River.
- **Station Construction**
  - Munster-Ridge Station
    - Landscaping and Fence Installation.
  - Munster-Dyer East Platform Access
    - Station and Platform excavation complete.
    - Prepping for concrete work at station.
      - Trucking operations on Allison Road, minimal impacts to vehicular traffic.
- **Munster-Dyer East Parking Lot**
  - Pump Station Construction
    - Backfill of pump station and future concrete work.
      - Trucking operations on Allison Road, minimal impacts to vehicular traffic.

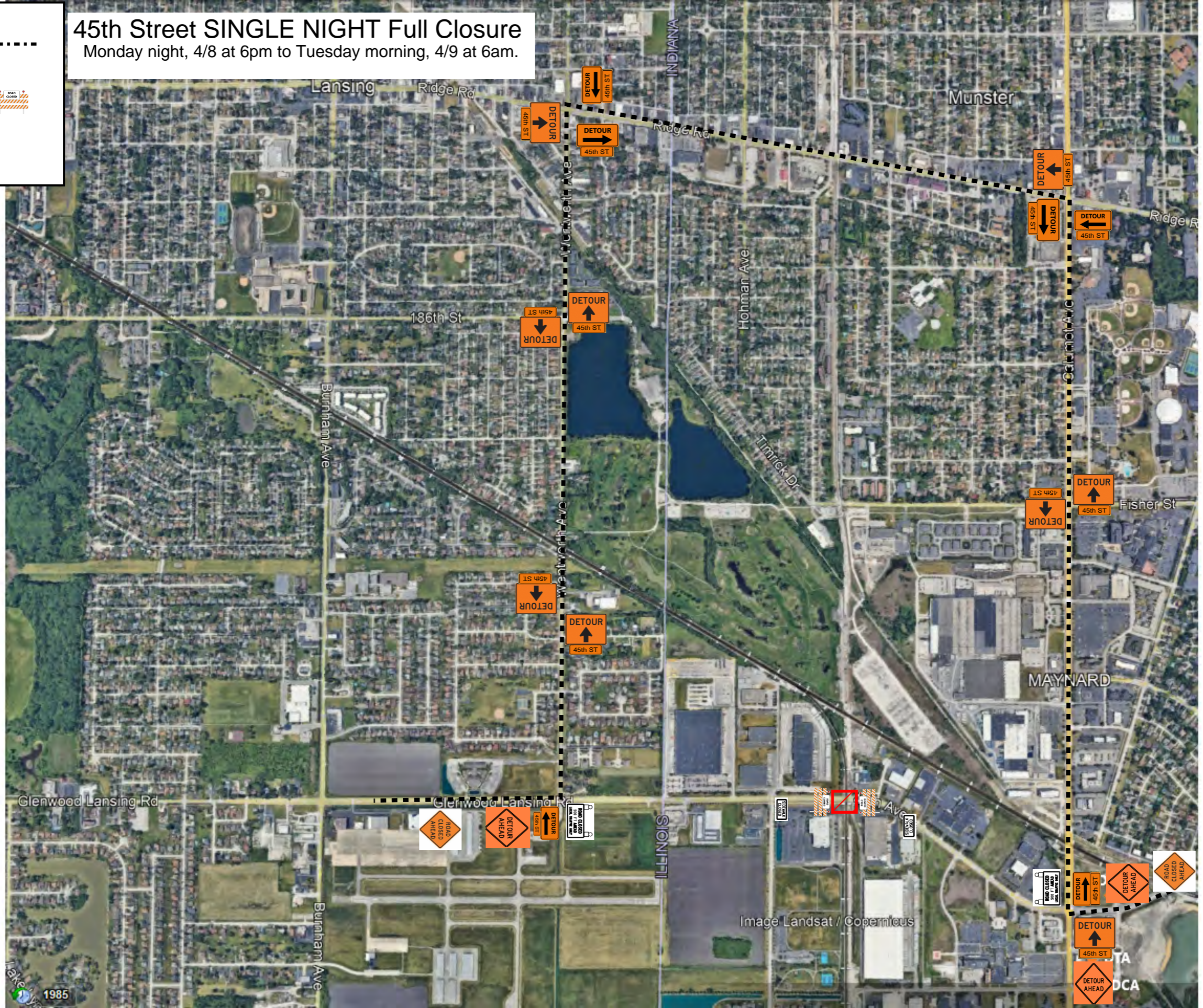
**For additional project information please visit:  
[www.nictdwestlake.com](http://www.nictdwestlake.com) or [www.fhp-rb.com](http://www.fhp-rb.com)**

# Legend

- Vehicle Detour 
- Work Zone 
- Type III Barricade 

## 45th Street SINGLE NIGHT Full Closure

Monday night, 4/8 at 6pm to Tuesday morning, 4/9 at 6am.



Single Lane Closures. (North Most Lane)  
Daily Closures. (6am to 6pm)



9324

Humane Indiana

Regional Cremation Services

Velko

45th Ave

45th Ave

45th Ave

45th Ave

Kennedy Ct

Kennedy Ct

45th Ave

45th Ave

Family Christian Center

Jesus Of Nazareth

Google

Single Lane Closures. (South Most Lane)  
Daily Closures. (6am to 6pm)



45th Ave

45th Ave

45th Ave

45th Ave

45th Ave

45th Ave

45th Ave

Kennedy Ct

Kennedy

KRC Logistics

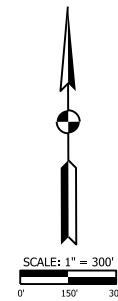
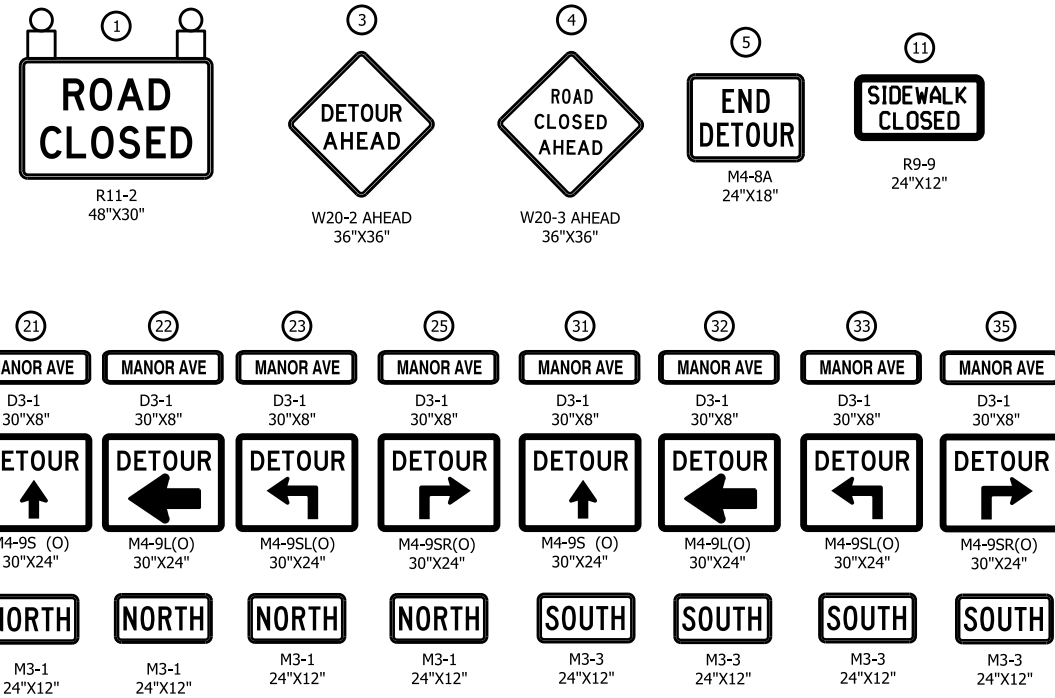
Humane Indiana

Regional Cremation Services

Family Christian Center

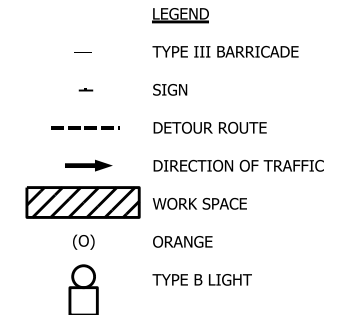
Jesus Of Nazareth

Google



**NOTES**

- SIGN DESIGNATIONS ARE PER MUTCD.
- SIGN LOCATIONS ARE APPROXIMATE. SEE BU G-C01 DWG. NO. [G-CI01-GEDT-806](#) FOR SIGN PLACEMENT.
- SEE BU G-C01 DWG. NO. [G-CI01-GEDT-824A](#) FOR SIGN POST DETAILS.
- SEE BU G-C01 DWG. NO. [G-CI01-GEDT-807](#) AND [G-CI01-GEDT-808](#) FOR TYPE III BARRICADE SIGN PLACEMENT.
- THIS DETOUR WILL BE USED FOR MANOR AVE RECONSTRUCTION.



PLOT DATE: 12/20/2022 PLOT TIME: 11:32:08 AM  
FILE NAME: SHT-S-RD07-MTPL-02.dgn

**FHP** | F.H. PASCHEN  
RAGNAR BENSON  
JOINT VENTURE

**Jacobs**

| REVISIONS |      |             |
|-----------|------|-------------|
| ISSUE     | DATE | DESCRIPTION |
|           |      |             |
|           |      |             |
|           |      |             |
|           |      |             |
|           |      |             |

**NICD**  
NORTHERN INDIANA COMMUTER  
TRANSPORTATION DISTRICT  
33 East Highway 12  
Chesterton, Indiana 46304

**WEST LAKE**  
CORRIDOR  
DYER TO HAMMOND, INDIANA

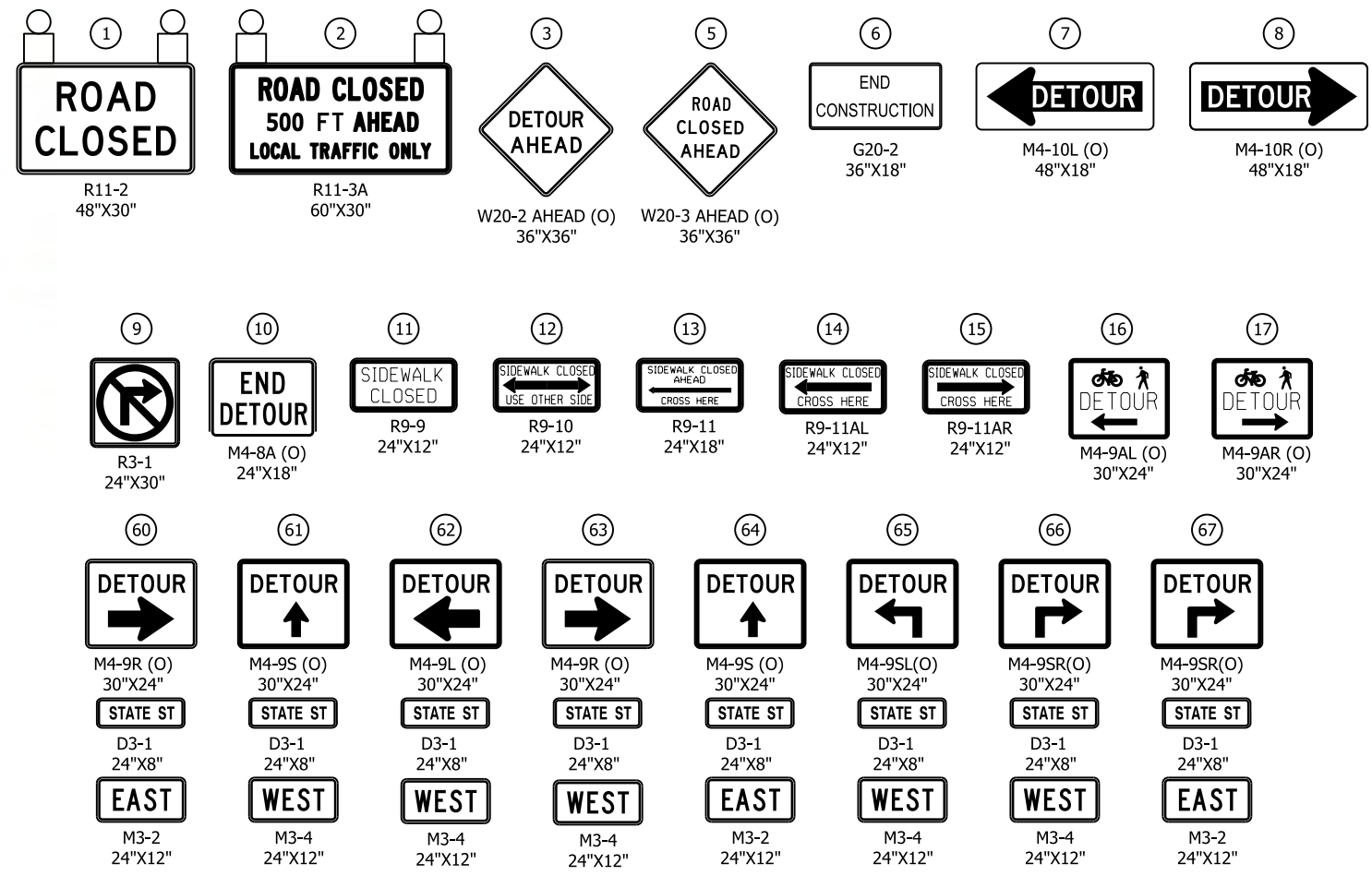
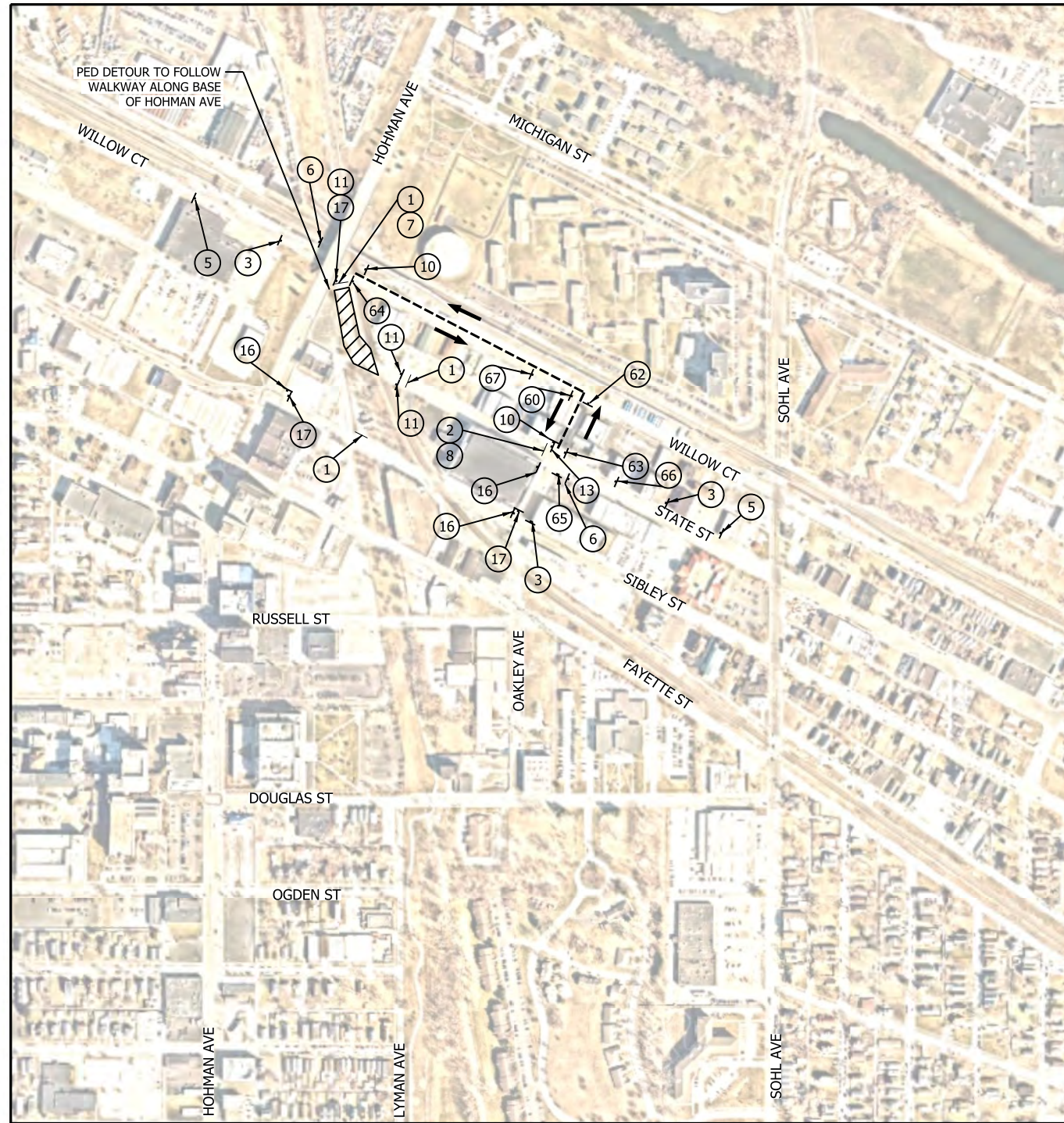
SAIYA S. TALLAMRAJU  
REGISTERED  
PE10809037  
STATE OF INDIANA  
PROFESSIONAL ENGINEER  
DATE: 12/21/2022

|           |              |
|-----------|--------------|
| BU:       | S-RD07       |
| DESIGNED: | S.TALLAMRAJU |
| DRAWN:    | P.STEPANOVIC |
| CHECKED:  | J.SPAIN      |
| SCALE:    | 1"=300'      |
| DATE:     | 01/06/2023   |

**FINAL RFC PLANS** | DWG NO. S-RD07-MTPL-02

**MAINTENANCE OF TRAFFIC  
DETOUR PLAN - MANOR AVENUE**

**FOR CONSTRUCTION** | SHEET NO. 8 OF 66

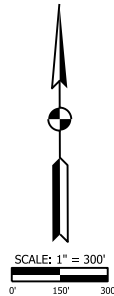


**NOTES**

- SIGN DESIGNATIONS ARE PER IMUTCD.
- SIGN LOCATIONS ARE APPROXIMATE. SEE BU G-C01 DWG. NO. G-CI01-GEDT-828 FOR SIGN PLACEMENT.
- SEE BU G-C01 DWG. NO. G-CI01-GEDT-820, G-CI01-GEDT-821 AND G-CI01-GEDT-822 FOR SIGN POST DETAILS.
- SEE BU G-C01 DWG. NO. G-CI01-GEDT-807 AND G-CI01-GEDT-808 FOR TYPE III BARRICADE APPLICATION STANDARDS.
- THE CONTRACTOR SHALL MAINTAIN FREE PASSAGE OF PEDESTRIANS ON ONE SIDE OF STATE STREET WHEN PRACTICABLE.
- TRAFFIC SIGNALS AT STATE ST AND WILLOW CT TO BE BAGGED DURING CLOSURE OF STATE ST.

**LEGEND**

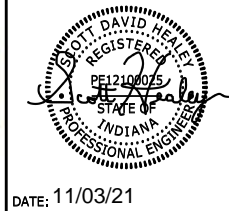
- TYPE III BARRICADE
- SIGN
- - - - DETOUR ROUTE
- DIRECTION OF TRAFFIC
- ▨ WORK SPACE
- (O) ORANGE
- TYPE B LIGHT



PLOT DATE: 11/3/2021 PLOT TIME: 1:01:08 PM  
FILE NAME: SHT-N-CI01-MTPL-05.dgn



| REVISIONS |      |             |
|-----------|------|-------------|
| ISSUE     | DATE | DESCRIPTION |
|           |      |             |
|           |      |             |
|           |      |             |
|           |      |             |



|           |              |
|-----------|--------------|
| BU:       | N-CI01       |
| DESIGNED: | A. SIPKOVSKY |
| DRAWN:    | S. KOZLOWSKI |
| CHECKED:  | A. SIPKOVSKY |
| SCALE:    | 1"=300'      |
| DATE:     | 10/20/2021   |

**FINAL RFC PLANS** DWG NO. N-CI01-MTPL-05

**MAINTENANCE OF TRAFFIC  
DETOUR PLAN - STATE STREET**

**FOR CONSTRUCTION** SHEET NO. **15 OF 78**